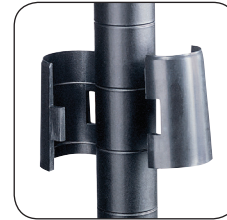


Commercial Wire Shelving



Snap-on compression sleeves allow easy adjustment of shelves in 1" increments. The dual ridges provide the added contact required for heavy loads

- steel construction
- shelves adjust in 1" increments
- open wire shelves reduce dust accumulation
- adjustable leveling feet with plastic caps
- rated up to 500 lbs. per shelf (2,000 lbs. per unit)
- NSF certified
- assembly required



Model	Description	W x D x H	Ship Weight	Price Each
5276BL	36" Basic Unit	36 x 18 x 72"	46 lbs.	\$236.00
5241BL	48" Basic Unit	48 x 18 x 72"	52 lbs.	263.00
5242BL	48" Extra Shelves 2-Pack	48 x 18 x 1"	22 lbs.	134.00
5243BL	36" Extra Shelves 2-Pack	36 x 18 x 1"	18 lbs.	110.00