

Kwik-File, LLC

File Harbor Cabinet

Wire Dividers

MWD: A package of 4 Wire Dividers to be suspended from:

MS48: 42" shelf to fit 48" wide Cabinet

MS42: 36 3/4" shelf to fit 42" wide Cabinet

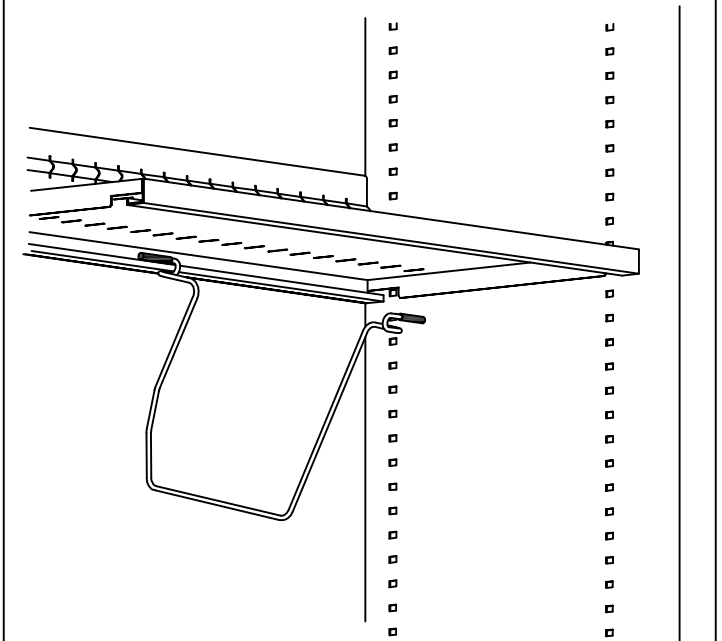
MS36: 30 3/4" shelf to fit 36" wide Cabinet

NO Tools Required:

To Install Wire Dividers:

1. Remove packaging material. NOTE: Check for concealed damage. Report any damage to carrier.
2. Wire Dividers are used to separate 3-ring binders, books, etc., which rest on the shelves. The Wire Dividers must be suspended from another shelf directly above the binders. If the binders will be on the top shelf of the cabinet, another shelf for suspending the wire dividers must be placed above them at the very top of the cabinet.
3. If storing binders, you will need 13 slots of vertical space for the binders and the shelf supporting the binders, and one additional slot for the shelf above (from which the Wire Dividers hang).
4. Before attempting to install the Wire Dividers, first install both the shelf above and below the binder storage area.
5. *See Drawing A.* Squeeze the front and back of the Wire Divider together slightly so that it fits between the front and back lips of the shelf above.
6. To position the Wire Divider exactly as desired, slide it sideways, squeezing the front and back together if necessary.
7. Once the Wire Divider is positioned properly, spread it apart so that the rubber tipped ends are forced all the way into the front and back lips of the shelf above.
8. To re-position a Wire Divider, squeeze the front and back ends together so that the rubber tipped ends come out of the shelf lips, then move it as desired.

Drawing A



Installing Wire Divider



Kwik-File, LLC
490 Northco Drive
Minneapolis, MN 55432
Phone: 1-800-822-8037
Fax: 920-457-7388
Online: www.mayline.com

Kwik-File, LLC

File Harbor Cabinet

Hanger Bar

MHB48: 42" Hanger Bar for 48" wide Cabinet

MHB42: 36 3/4" Hanger Bar for 42" wide Cabinet

MHB36: 30 3/4" Hanger Bar for 36" wide Cabinet

NO Tools Required:

To Install Hanger Bar:

1. Remove packaging material. NOTE: Check for concealed damage. Report any damage to carrier.
2. Remove the 4 shelf clips from the plastic bag taped to the bar.
3. See the attached Configuration Guide for the recommended spacing between the Hanger Bar and other components. Make sure you know which media the hanger bar is intended to support (tape seal, print-outs, etc.), and how much space the media will take below the hanger bar, and above the next component. (As an example, 13 slots are required for both the Hanger Bar and a 10 1/2" tape seal).

4. Put the shelf clips (small tips with flat ends) are inserted upwards - see *Drawing A*) in the proper slots in the inside end panels.

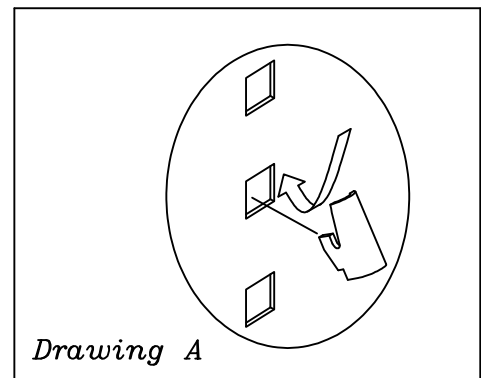
5. See *Drawing B* showing schematic of Hanger Bars.

6. Install the left support rail on the shelf clips.

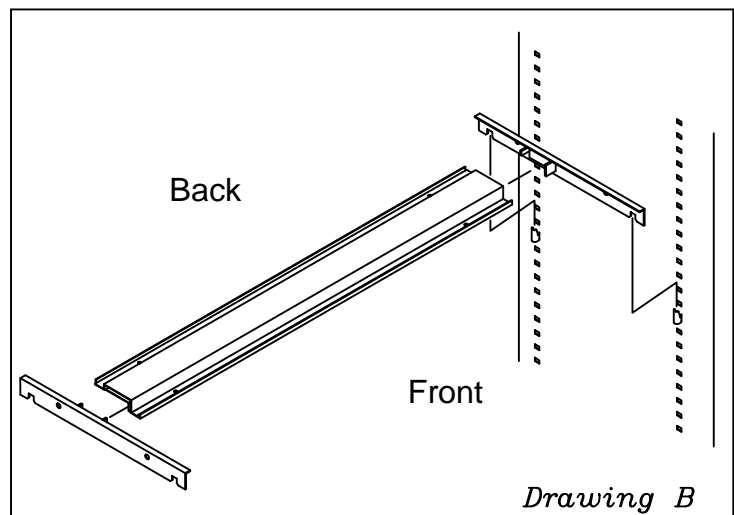
7. With the right end of the Hanger Bar tipped upwards (to provide clearance between the bar and the right inside end panel of the cabinet), insert the left end of the bar into the tabs on the left rail, with the lower side of the bar facing the front of the cabinet, as shown in Drawing B.

8. With the right end of the bar still tipped upwards, connect the right rail to the bar by inserting the right rail tabs into the slots in the right end of the bar.

9. Ease the right side of the Hanger Bar assembly down onto the shelf clips so that it is firmly in place.



Drawing A



Drawing B



Kwik-File, LLC
490 Northco Drive
Minneapolis, MN 55432
Phone: 1-800-822-8037
Fax: 920-457-7388
Online: www.mayline.com