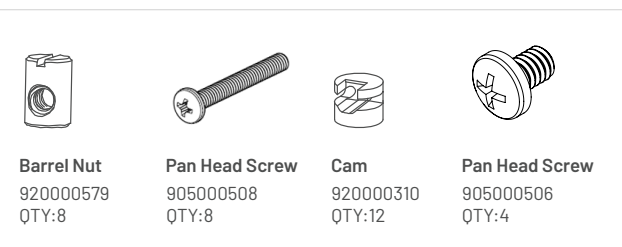
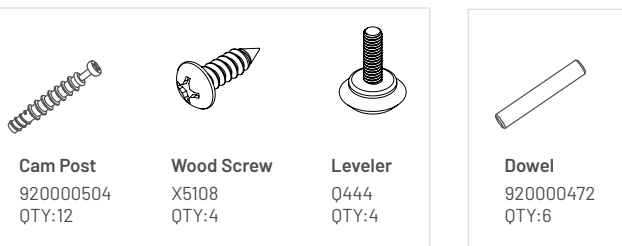


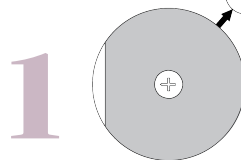
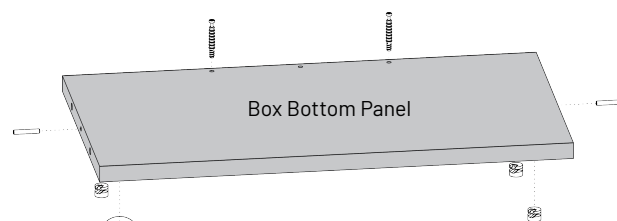
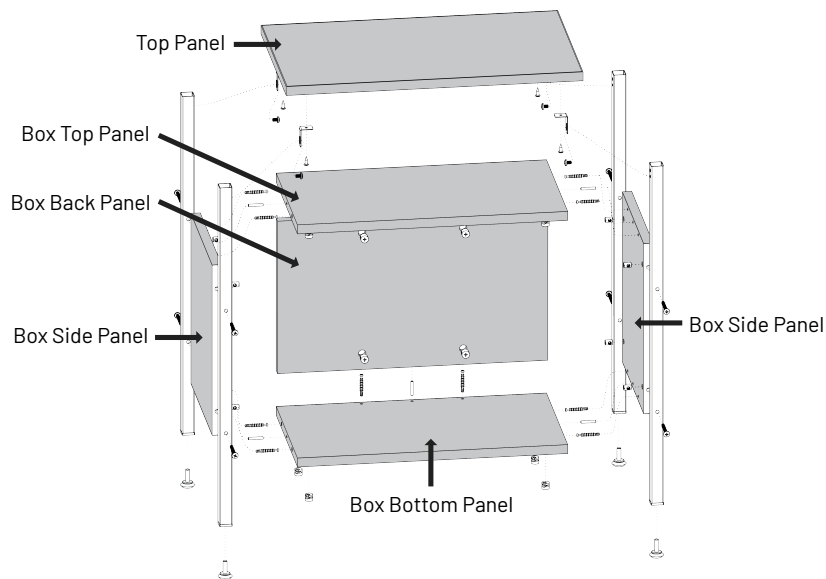
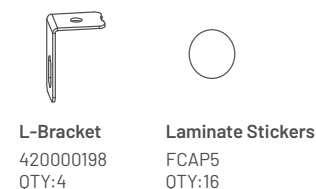
Tools required for assembly:  
Phillips screwdriver and rubber mallet

### Hardware Included:

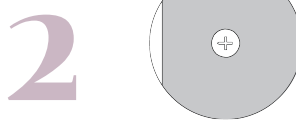
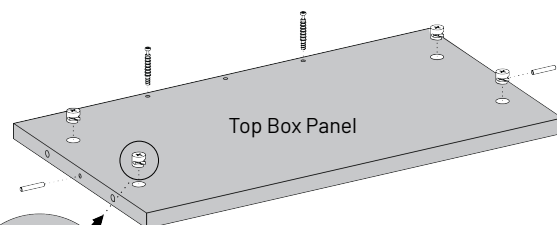
Pack# 900000385



### Other Hardware



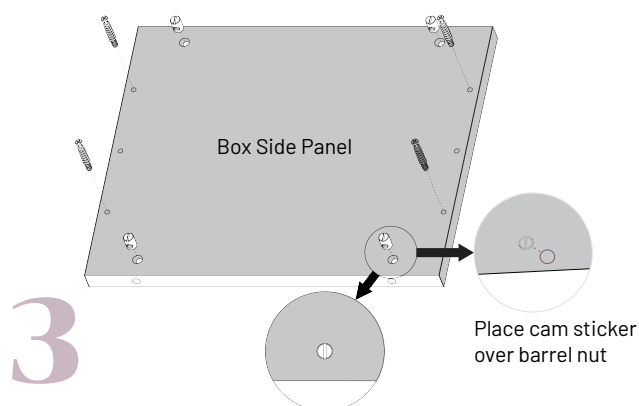
1 Insert 4 cams (with arrow out) into the bottom of the box bottom panel. Using a Philips screwdriver, screw 2 cam posts into the outside holes on the back edge of the panel until tight to the panel. Insert 1 dowel in each of the short edges of the panel and tap with a rubber mallet until they cannot be inserted any further.



2 Insert 4 cams (with arrow out) into the box top panel. Using a Philips screwdriver, screw 2 cam posts into the outside holes on the back edge of the panel until tight to the panel. Insert 1 dowel in each of the short edges of the panel and tap with a rubber mallet until they cannot be inserted any further.

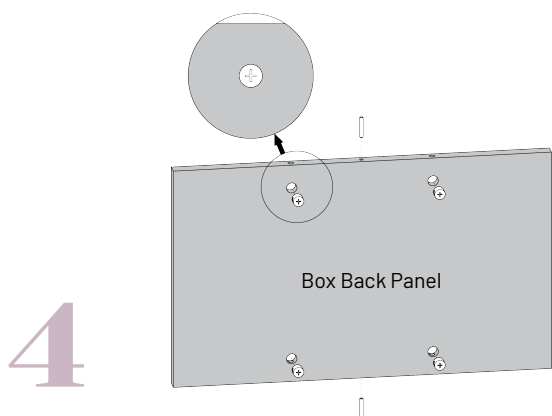
For questions or concerns, please call 1-888-971-6225 available Monday-Friday 7:30 AM to 5:00 PM CST (English-speaking operators)

Product Warranty is available at:  
[safcoproducts.com](http://safcoproducts.com)

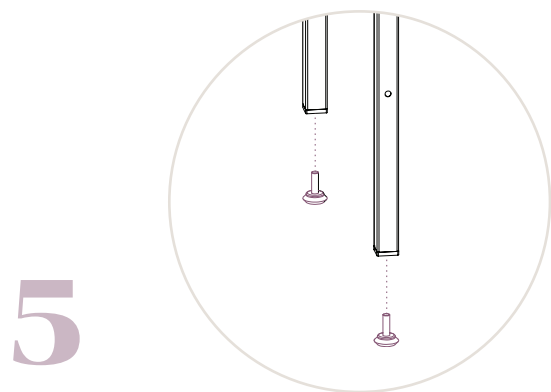


Insert 4 barrel nuts into the box side panel (with the open threaded holes in line with the holes in the panel) and cover the head of each of the barrel nuts with a laminate sticker. Using a Phillips screwdriver, screw 2 cam posts into the outside holes on the top edge of the panel and screw 2 cam posts into the outside holes on the bottom edge of the panel until tight to the panel.

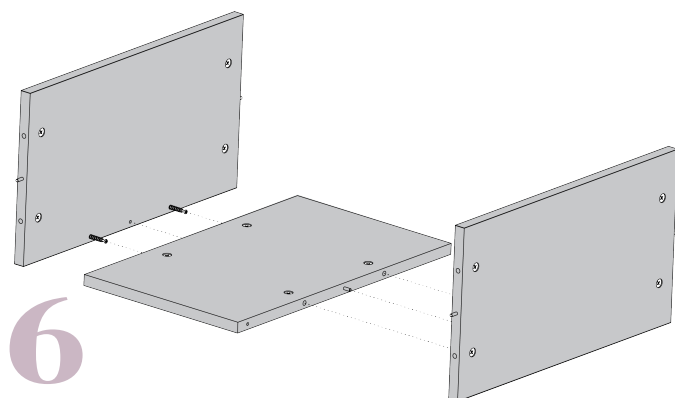
**Repeat all of step 3 on the second box side panel.**



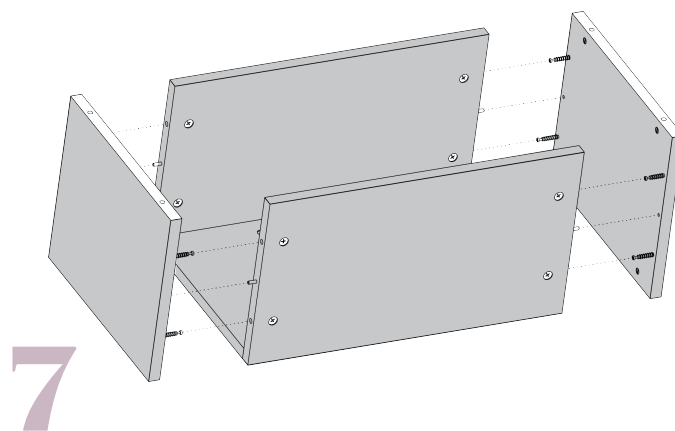
Insert 1 dowel in each of the long edges of the box back panel and tap with a rubber mallet until they cannot be inserted any further. Attach 4 cams into the panel with the arrows facing the board edge.



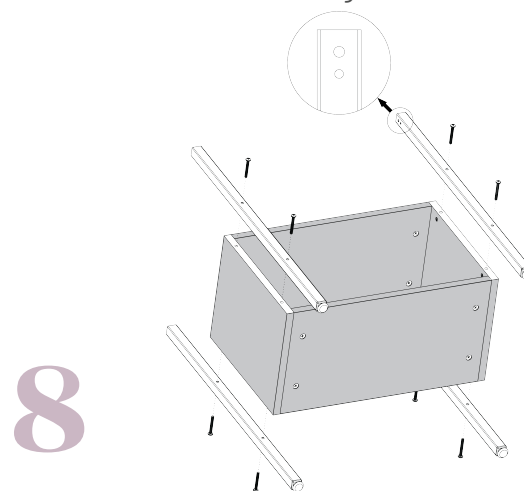
Screw 1 leveler into each leg until tight.



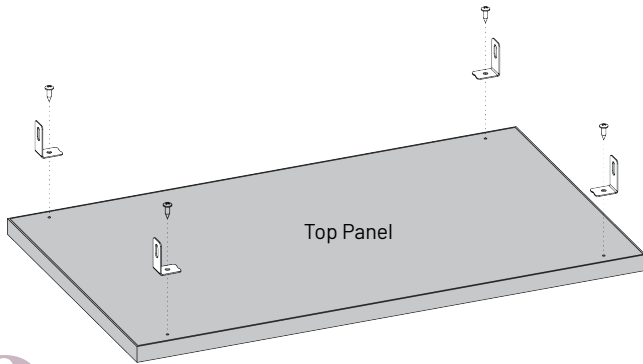
Place the box back panel (from step 4) on a flat surface. Attach the box top panel (from step 2) and the bottom box panel (from step 1). Use a Phillips screwdriver to turn cams clockwise to tighten.



Attach the 2 box side panels (from step 3) to the box top panel and box bottom panels. Use a Phillips screwdriver to turn cams clockwise to tighten.

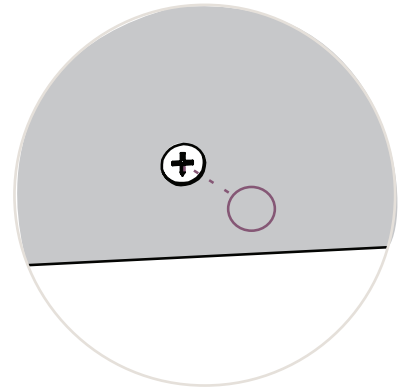


Use a Phillips screwdriver to attach the legs to the box side panels using the long pan head screws. Ensure the threaded holes at the top of the legs are facing in.



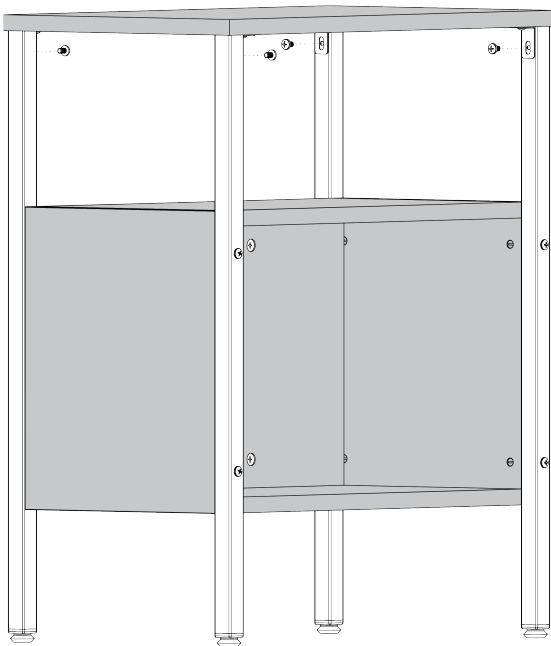
# 9

Use a Phillips screwdriver to attach 4 L-brackets to the top panel through the single hole with wood screws. Brackets should face the short side of the top



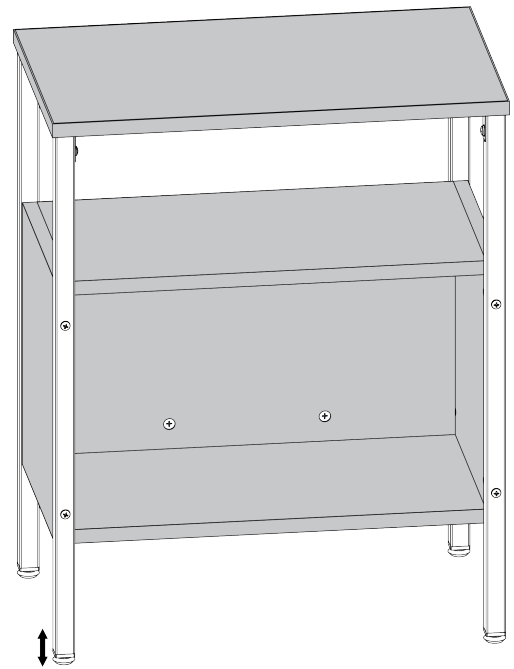
# 11

Use laminate stickers to cover cams on the inside of storage box.



# 10

Use a Phillips screwdriver to attach L-brackets to legs through slots using the 4 short pan head screws.



# 12

Ensure proper leveling of the storage unit by adjusting the levelers.