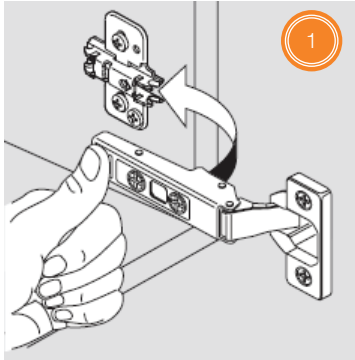


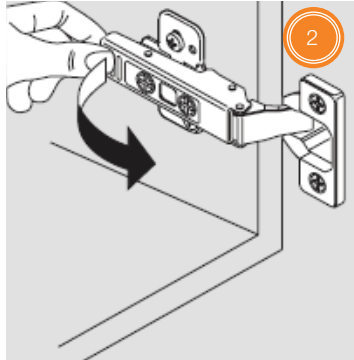


# EURO HINGE ATTACHMENT AND ADJUSTMENT



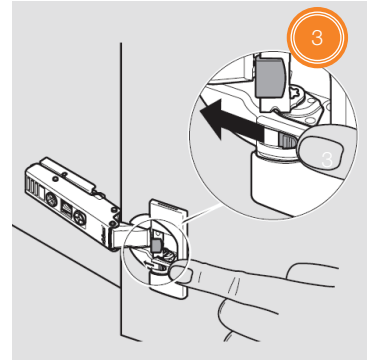
**DOOR INSTALLATION**

To install, place the hinge on the mounting plate and push the back of the hinge arm down with finger pressure. The "click" sound confirms a secure attachment.



**DOOR REMOVAL**

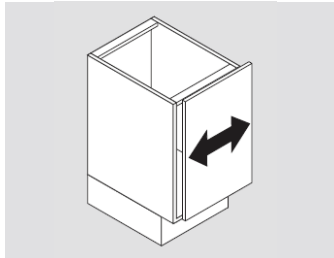
Release the lever under the hinge arm to remove.



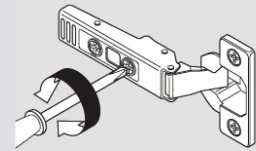
**CLIP TOP BLUMOTION DEACTIVATION**

For small or light doors, the BLUMOTION can be deactivated on one of the hinges. Door must be closed once for the deactivation to be complete. To reactivate, move switch back to the original position.

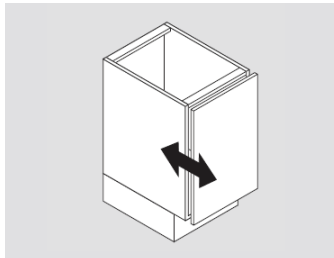
## › SIDE ADJUSTMENT



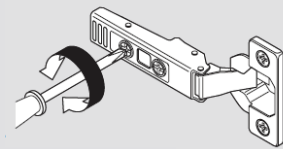
Rotate the front screw to increase or decrease the door overlay (+/-2 mm).



## › DEPTH ADJUSTMENT

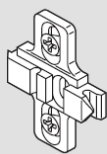
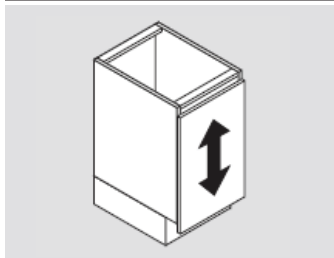


Rotate the rear spiral tech cam screw to adjust the door position (+ 3/-2 mm).



For CLIP hinges, loosen the rear screws on all hinges, adjust and retighten.

## › ONE-PIECE WING PLATE



Loosen screws on the mounting plate. Adjust door position and tighten screws (+/-3 mm).

