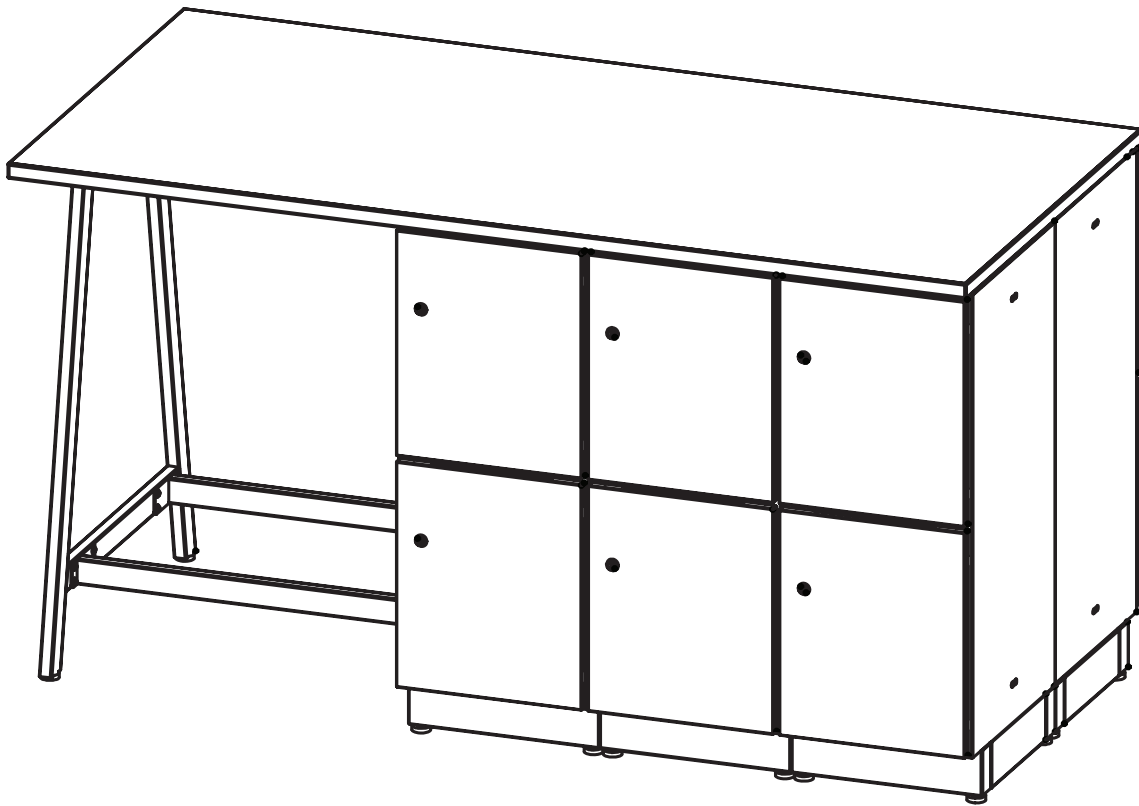


RESI™

STORAGE

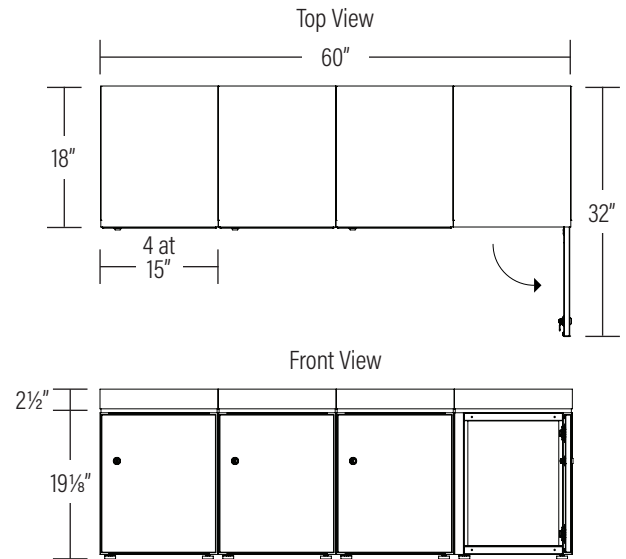
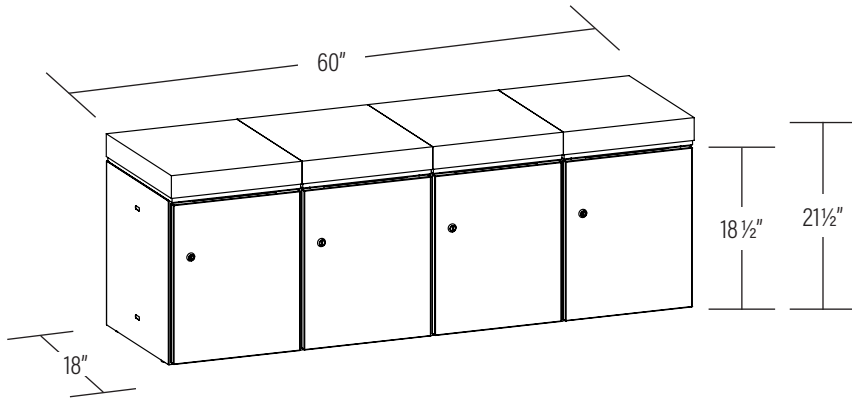
SPEC GUIDE



RESI™ Storage

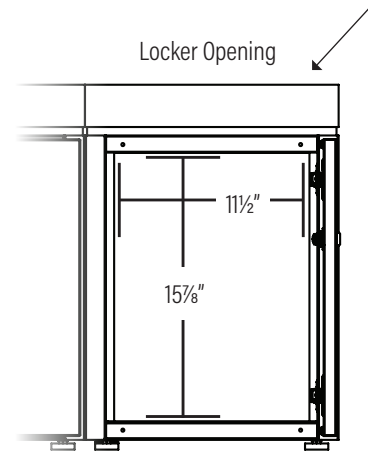
CC01 + CCUC

Locker Bench



Combining secure storage with a custom upholstered seat, the RESI™ Storage Locker Bench gives the nomadic workers and guests in your open-concept office a convenient place to sit down and collaborate while keeping personal belongings safe and secure.

- Includes four 18" locker modules and four upholstered top cushions
- Individual locker modules ship fully assembled with hinges, doors, and locks already installed
- Build the arrangement by connecting locker modules side to side using the included ganging kits
- Leveling glides on each locker allow for proper alignment of the tops of multiple modules
- Cushioning on the top of the bench features custom upholstery in a choice of fabric grades 1-3 or COM
- Overall Size: 60"W x 18"D x 21 5/8"H



HOW TO SPECIFY

1. Lock Type Selection

- Keyed Lock
- Digital Lock

2. Metal Color Selection

- Black Textured Powder Coat
- White Powder Coat

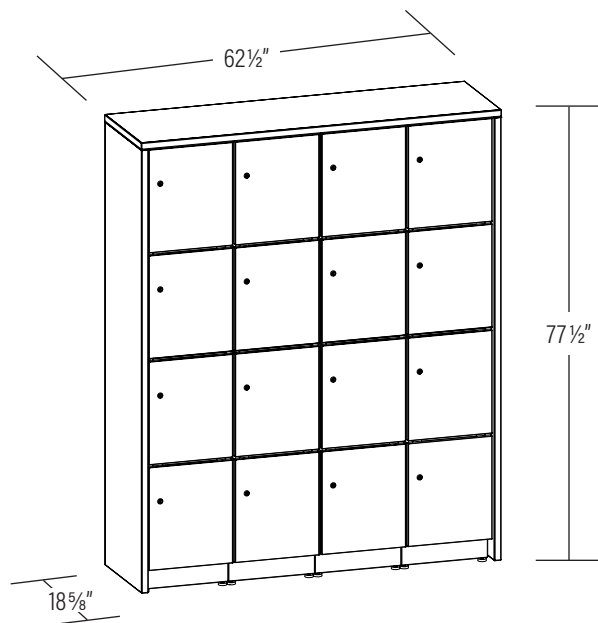
3. Locker Upholstery Selection

- Grade 1
- Grade 2
- Grade 3
- COM

RESI™ Storage

CC06

Locker Wall



Essential to any open-concept office, the RESI™ Storage Locker Wall provides secure storage for the important personal belongings of your nomadic workers, guests, clients, and other individuals with no assigned workspace.

- Includes eight 36" locker modules (16 individual storage spaces), toe kick assembly and high pressure laminate top and side wraps
- Individual locker modules ship fully assembled with concealed hinges, doors and locks already installed
- Build the arrangement by connecting locker modules side to side and top to bottom using the included ganging kits
- Leveling glides on each locker allow for proper alignment of the tops of multiple modules
- Locker Wall arrangement sits on a toe kick assembly, providing added foot space and elevation
- Overall Size: 62 1/2"W x 18 5/8"D x 77 1/2"H

HOW TO SPECIFY

1. Lock Type Selection

- Keyed Lock
- Digital Lock

2. Metal Color Selection

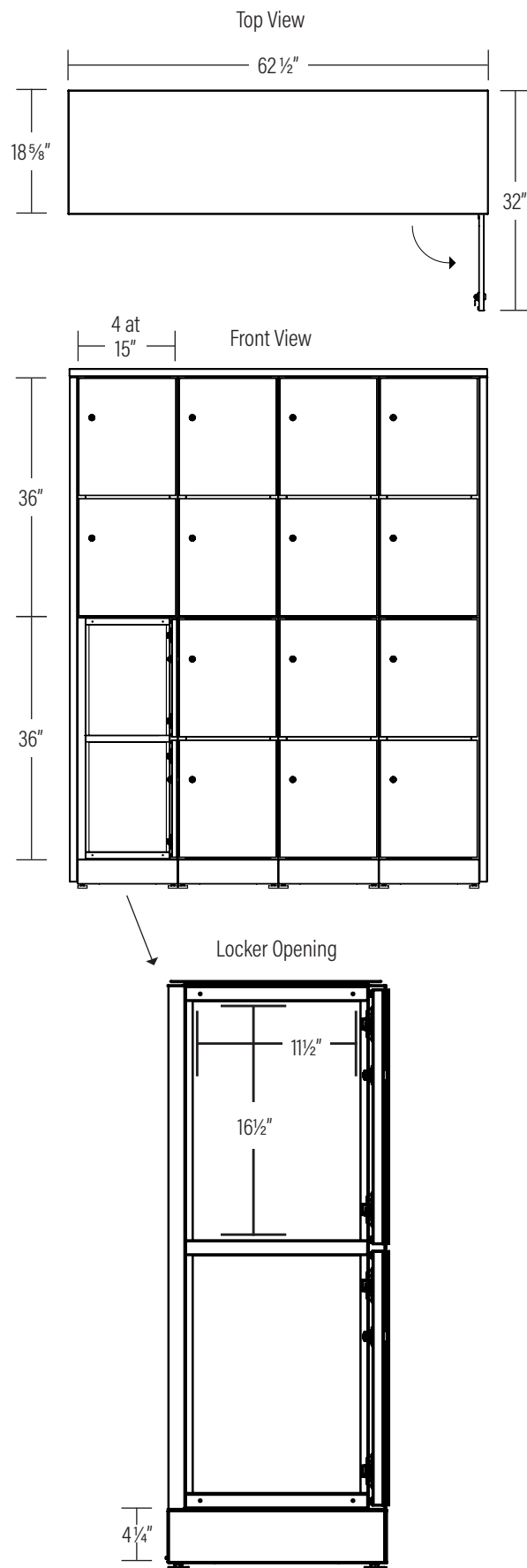
- Black Textured Powder Coat
- White Powder Coat

3. HPL Surround Color Selection

- See HPL color options on pg. 11

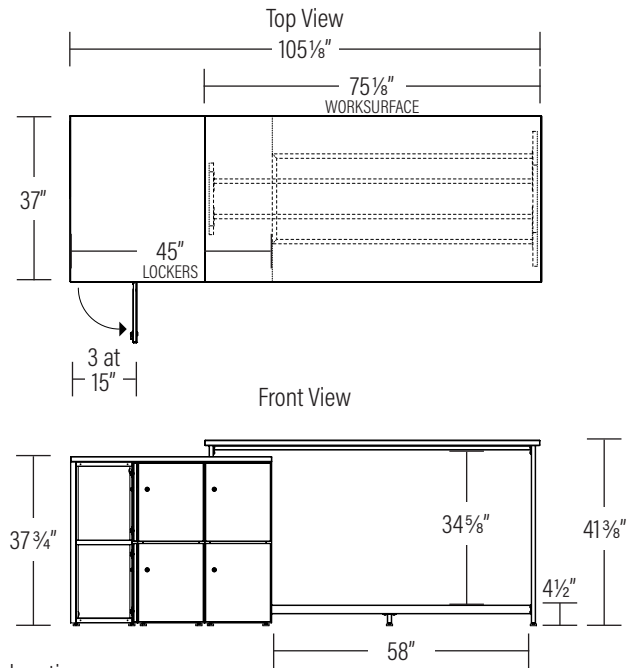
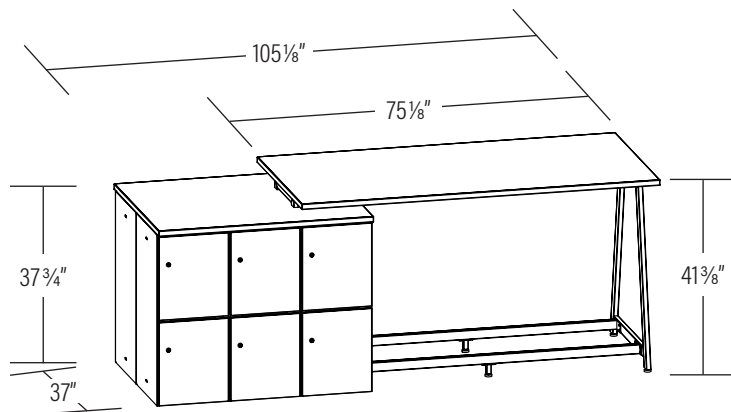
4. Edge Band Color of HPL Surround Selection

- See edge band color options on pg. 11



CC08

Dual-Height Collaborative Workstation



Combining locker modules with spacious tabletop surfaces, the RESI™ Storage Dual-Height Collaborative Workstation creates a touchdown point for nomadic workers to come together while also providing convenient, secure storage for their important personal belongings.

- Includes six 36" locker modules (12 individual storage spaces), high pressure laminate work surfaces and metal A-frame table base
- Locker modules feature robust steel construction with finished backs and a White or textured Black powder coat
- Select either traditional keyed locks for the doors or more modern digital locks
- Individual locker modules ship fully assembled with concealed hinges, doors, and locks already installed
- Sturdy metal A-frame table base raises the work surface to a bistro height and includes an integrated footrest
- 75" upper-tier surface offers 60" of seated work space to accommodate about four individuals in extended-height chairs
- Pick the color of the high pressure laminate work surfaces from a variety of options
- Overall Size: 105"W x 36 1/2"D x 41"H
- Counter Size: 75"W x 36 1/2"D
- Locker Surface Height: 37 3/4"H

HOW TO SPECIFY

1. Lock Type Selection

- Keyed Lock
- Digital Lock

2. Metal Color Selection

- Black Textured Powder Coat
- White Powder Coat

3. HPL Color of Worksurface Selection

- See HPL color options on pg. 11

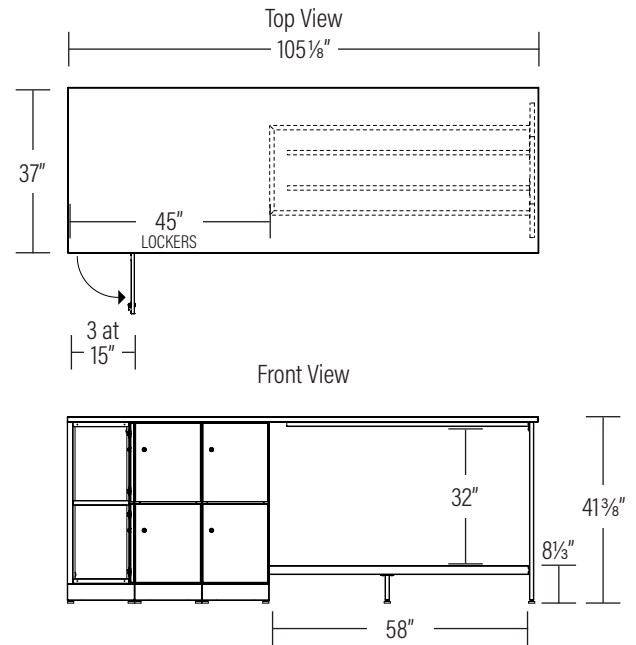
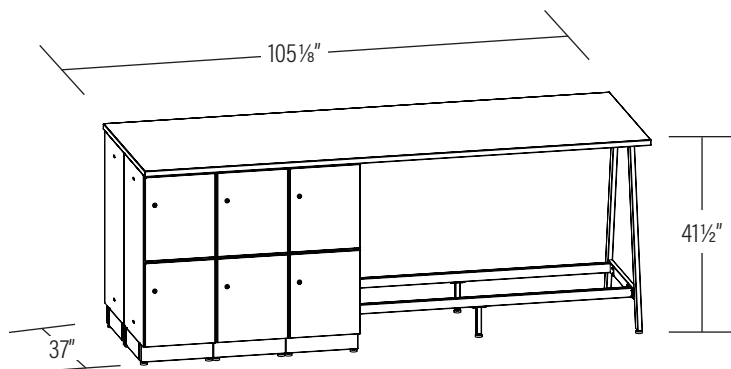
4. Edge Band Color of Worksurface Selection

- See edge band color options on pg. 11

RESI™ Storage

CC10

Bistro-Height Collaborative Workstation



Perfect for an impromptu brainstorming session with the full team or just a quick touch-base with some key contributors, the RESI™ Storage Bistro-Height Collaborative Workstation provides an ample worksurface for the group to gather around and plenty of lockers to securely store their important belongings.

- Includes six 36" locker modules (12 individual storage spaces), high pressure laminate work surface, toe kick assembly and metal A-frame table base
- Locker modules feature a White or textured Black powder coat finish inside and out
- Select either traditional keyed locks for the doors or more modern digital locks
- Individual locker modules ship fully assembled with concealed hinges, doors, and locks already installed
- Locker modules sit up on a toe kick assembly, creating more foot space and allowing for more comfortable access to both the worksurface and the lockers
- Sturdy metal A-frame table base supports the work surface and includes an integrated footrest
- 105" top surface offers 60" of seated work space to accommodate about four individuals in extended-height chairs
- Pick the color of the high pressure laminate work surface from a variety of options
- Overall Size: 105 1/4"W x 36 1/2"D x 41 1/2"H
- Counter Size: 105 1/4"W x 36 1/2"D

HOW TO SPECIFY

1. Lock Type Selection

- Keyed Lock
- Digital Lock

2. Metal Color Selection

- Black Textured Powder Coat
- White Powder Coat

3. HPL Color of Worksurface Selection

- See HPL color options on pg. 11

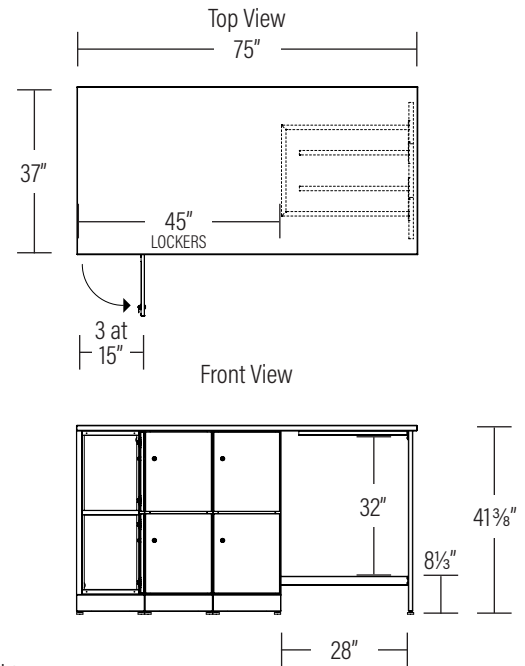
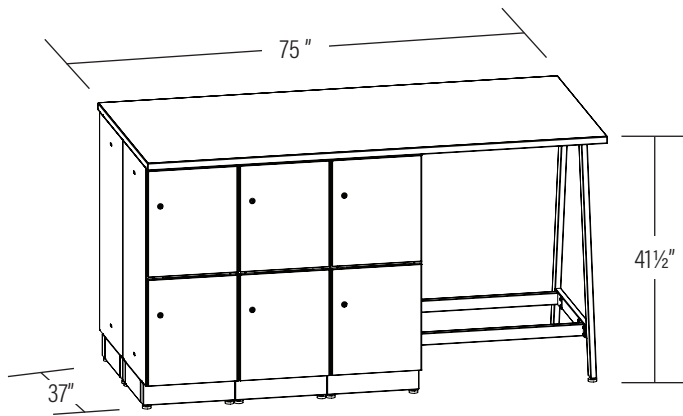
4. Edge Band Color of Worksurface Selection

- See edge band color options on pg. 11

RESI™ Storage

CC11

Bistro-Height Compact Collaborative Workstation



Designed to thrive in the smaller spaces of your open-concept office, the RESI™ Storage Bistro-Height Compact Collaborative Workstation offers your nomadic workers plenty of secure storage for their personal items while providing a convenient worksurface for meeting and sharing ideas.

- Includes six 36" locker modules (12 individual storage spaces), high pressure laminate worksurface, toe kick assembly and metal A-frame table base
- Locker modules feature a White or textured Black powder coat finish inside and out
- Select either traditional keyed locks for the doors or more modern digital locks
- Individual locker modules ship fully assembled with concealed hinges, doors, and locks already installed
- Locker modules sit up on a toe kick assembly, creating more foot space and allowing for more comfortable access to both the worksurface and the lockers
- Sturdy metal A-frame table base supports the worksurface and includes an integrated footrest
- 75" top surface offers 30" of seated work space to accommodate about two individuals in extended-height chairs
- Pick the color of the high pressure laminate worksurface from a variety of options
- Overall Size: 75 ¼"W x 36 ½"D x 41 ½"H
- Counter Size: 75 ¼"W x 36 ½"D

HOW TO SPECIFY

1. Lock Type Selection

- Keyed Lock
- Digital Lock

2. Metal Color Selection

- Black Textured Powder Coat
- White Powder Coat

3. HPL Color of Worksurface Selection

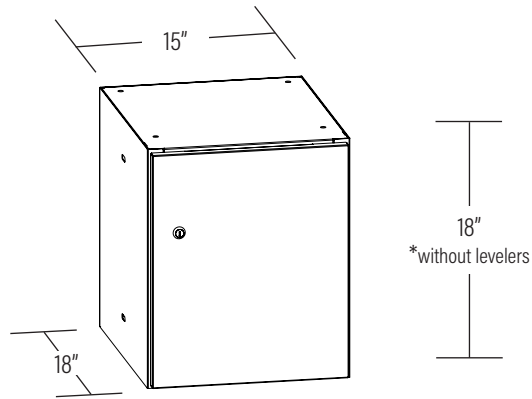
- See HPL color options on pg. 11

4. Edge Band Color of Worksurface Selection

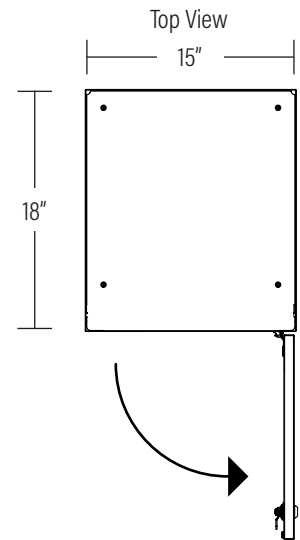
- See edge band color options on pg. 11

CCL18C

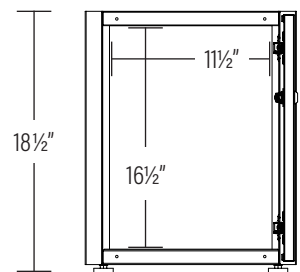
18" Cube Locker



*Optional levelers add ½" to overall locker height



Front View



Support the nomadic workers in your open-concept office by providing secure storage spaces for their important personal items. Free them from worrying about the security of their cell phones, laptops and backpacks and allow them to devote that energy to finding creative solutions to your company's most complex challenges.

- Easily connect locker modules back to back, side to side, or top to bottom using the included ganging kits
- Individual locker modules ship fully assembled with hinges, door, and lock already installed
- Locker wrap and door feature a White or textured Black powder coat finish inside and out
- Select either a traditional keyed lock for the door or a more modern digital lock
- Concealed hinges stay behind the closed door
- Leveling glides at the four corners of the locker help reduce wobble caused by uneven flooring and support proper alignment of multiple modules
- Overall Size: 15"W x 18"D x 18"H (18 ½"H with optional levelers)

HOW TO SPECIFY

1. Lock Type Selection

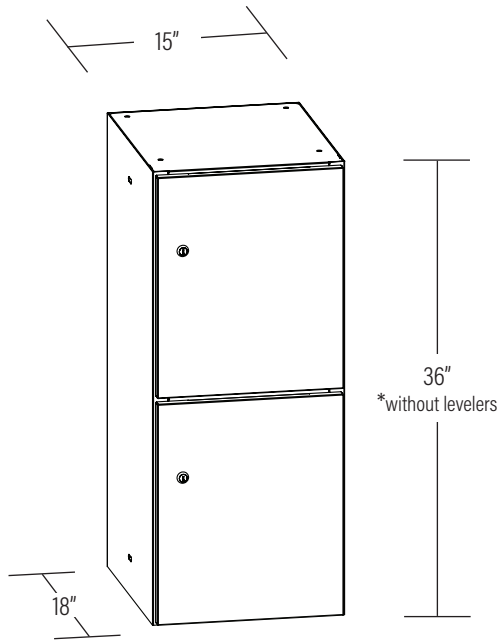
- Keyed Lock
- Digital Lock

2. Metal Color Selection

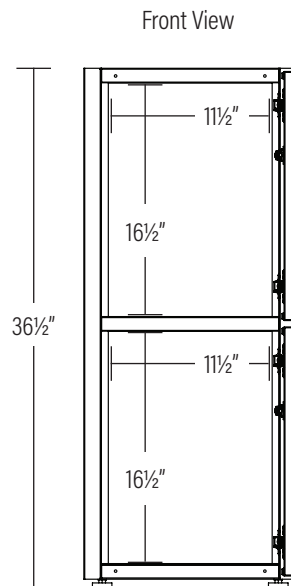
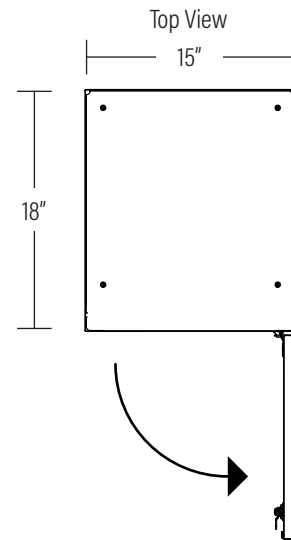
- Black Textured Powder Coat
- White Powder Coat

CCL36C

36" Cube Locker



*Optional levelers add ½" to overall locker height



Support the nomadic workers in your open-concept office by providing secure storage spaces for their important personal items. Free them from worrying about the security of their cell phones, laptops and backpacks and allow them to devote that energy to finding creative solutions to your company's most complex challenges.

- The 36" Cube Locker creates two individual, secure storage spaces, each with its own door and dedicated lock
- Easily connect locker modules back to back, side to side, or top to bottom using the included ganging kits
- Individual locker modules ship fully assembled with hinges, doors, and locks already installed
- Locker wrap and doors feature a White or textured Black powder coat finish inside and out
- Select traditional keyed lock for the doors or choose more modern digital locks
- Concealed hinges stay behind the closed doors
- Leveling glides at the four corners of the locker help reduce wobble caused by uneven flooring and support proper alignment of multiple modules
- Overall Size: 15"W x 18"D x 36"H (18 ½"H with optional levelers)

HOW TO SPECIFY

1. Lock Type Selection

- Keyed Lock
- Digital Lock

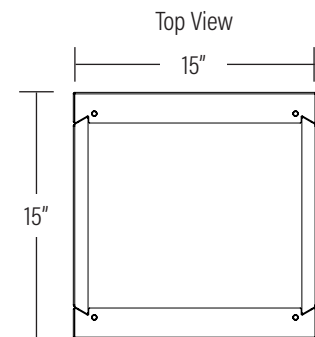
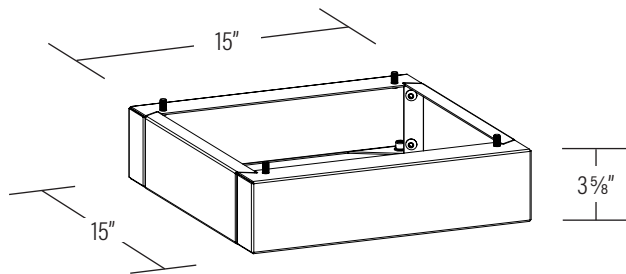
2. Metal Color Selection

- Black Textured Powder Coat
- White Powder Coat

RESI™ Storage

CCTK

Toe Kick



Front View



Add some altitude to those RESI™ Storage locker modules and make access to the interiors easier on your employees, co-workers and guests.

- Use the Toe Kick Assembly to add 3-5/8" of height to single Central Storage 18" or 36" Cube Locker Modules
- Toe Kick assembly features robust steel construction and a White or textured Black powder coat finish
- Overall Size: 15"W x 15"D x 3 5/8"H

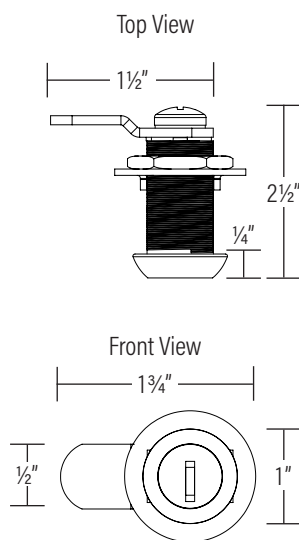
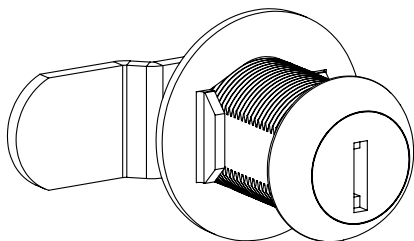
HOW TO SPECIFY

1. Metal Color Selection

- Black Textured Powder Coat
- White Powder Coat

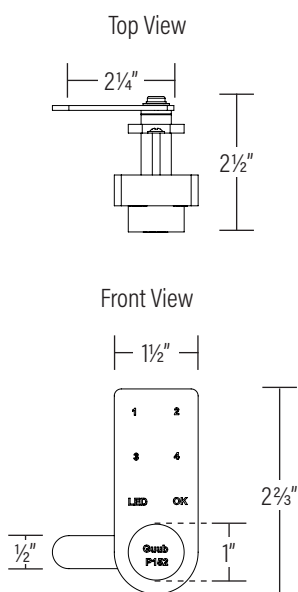
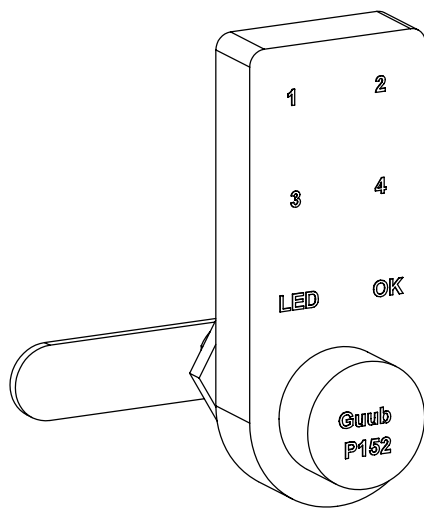
LOCKS

Keyed Lock



- Keyed locks feature a silver colored face stamped with the lock/key number
- Keyed locks include random-assigned cores/keys
- Two keys included for each lock
- Master key and replacement keys available

Digital Lock



Electronic locks are programed to revolving mode-the lock code is cleared after each complete locking cycle. To lock enter a 6 digit code then turn the knob. To unlock enter the same 6 digit code and turn the knob. At this point, the lock clears the code and is awaiting a new input.

- Runs on one (CR2032) cell battery (included)
- Lock includes a low battery indicator, which will sound when 200 uses remain
- Override code, specific to each individual lock, can be requested from Safco Customer Care

Worksurface & Edge Band Options



Worksurface:
Asian Sand - AISA

Edge Band:
Designer White - WI
-or-
Ice Gray - IG



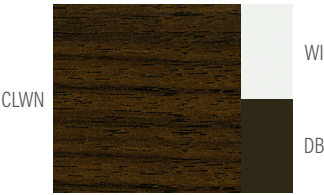
Worksurface:
Fashion Maple - FUMP

Edge Band:
Designer White - WI



Worksurface:
Fashion Gray - FNGY

Edge Band:
Designer White - WI
-or-
Ice Gray - IG



Worksurface:
Columbian Walnut - CLWN

Edge Band:
Designer White - WI
-or-
Dark Brown - DB



Worksurface:
Designer White - DSWT

Edge Band:
Designer White - WI
-or-
Black - BK



Worksurface:
Black - BLAK

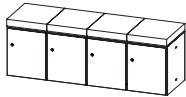
Edge Band:
Designer White - WI
-or-
Black - BK

RESI™ Storage Pricing

RESI™ Storage - Free Standing Lockers

- 36" lockers available with two 18" doors with internal dividing shelf
- Keyed (random – master key available) or Digital Locks (revolving code)
- Individual locker modules ship fully assembled
- Concealed adjustable door hinges
- Work surfaces are constructed with 1½" particle board with HPL and 3mm PVC edge banding
- All steel is finished with powder coat paint (white or textured black)
- 4 leveling glides for easy alignment (per locker)
- Upholstered seat cushions for use with CC01 only, available in grade 1-3 and COM
- Ganging hardware included for front to back, side to side, and top to bottom connection
- Optional toe-kick for use with CCL18C & CCL36C

Model #	Description	Fabric Grades/ Model #	List Price Ea.	List Carton Price	Quantity Per Carton	Actual Weight	S-Parcel Billable Weight	Carton Cube	Freight Class
Resi™ Storage - Free Standing Lockers									
CC01	Resi™ Storage - Single Wide Bench* Locker Height: 18½" Locker Upholstered Seat Height: 21½" Seat Size: 60"W x 18"D Overall Size: 60"W x 18"D x 18½"H (21½"H with Locker Upholstery)	CC01	1,800.00	1,800.00	-	-	LTL	-	-
Door Material				Upcharge					
Steel				N/C		N/C			
Lock Type				Upcharge					
Keyed Lock				N/C		N/C			
Digital Lock - DL (Price is Per Lock)				75.00		75.00			
Metal Color									
White Powder Coat				N/C		N/C			
Black Textured Powder Coat				N/C		N/C			
CCUC	Locker Upholstery* (Adds 3" to Seat Height, 4 Cushions per carton) Grade 1 Grade 2 Grade 3 COM Yardage: 2 yds.				4				
		01	N/C	N/C					
		02	20.00	20.00			See pgs. 96-97 for Grades 01 - 03 fabric swatches		
		03	40.00	40.00					
		COM	20.00	20.00					

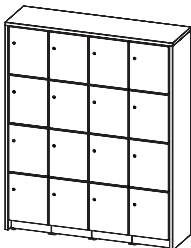


***Must order the Locker Upholstery separate when Ordering the CC01**

EXAMPLE OF HOW TO ORDER LOCKER UPHOLSTERY:

Model	Fabric Grade	Fabric Color	See pgs. 96-97 for Grades 01 - 03 fabric swatches
C C U C +	0 2 +	V I O 1	

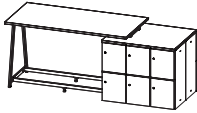
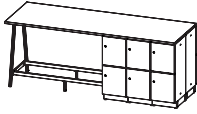
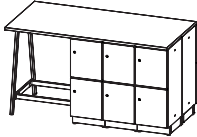
CC06	Resi™ Storage - Locker Wall Straight Overall Size: 62½"W x 18½"D x 77½"H	CC06	6,225.00	6,225.00	-	-	LTL	-	-
Number of Doors for 36" Lockers				N/C		N/C			
Double Door - DD									
Door Material				Upcharge					
Steel				N/C		N/C			
Lock Type				Upcharge					
Keyed Lock				N/C		N/C			
Digital Lock - DL (Price is Per Lock)				75.00		75.00			
Metal Color									
White Powder Coat				N/C		N/C			
Black Textured Powder Coat				N/C		N/C			



PLEASE CHOOSE OPTIONS FROM BELOW:

Model	Number of Doors for 36" Lockers	Door Material	Lock Type	Metal Frame Color	High Pressure Laminate (HPL) Worksurface Color	Edge Band Worksurface Color
CC06	DD-Double Door	STE-Steel	KL-Keyed Lock DL-Digital Lock	WH-White BL-Black Textured	DSWT-Designer White CLWN-Columbian Walnut BLAK-Black FNGY-Fashion Gray FUMP-Fusion Maple AISA-Asian Sand	BK-Black DB-Dark Brown WI-Designer White IG-Ice Gray
Example:						
C C 0 6 +	D D +	S T E +	D L +	B L +	D S W T +	I G +

RESI™ Storage - A-Frame Workstation Lockers

Model #	Description	Fabric Grades/ Model #	List Price Ea.	List Carton Price	Quantity Per Carton	Actual Weight	S-Parcel Billable Weight	Carton Cube	Freight Class
	CC08 Resi™ Storage - A-Frame Bistro/Counter w/Riser (Long) Counter Size: 75"W x 37"D Locker Surface Height: 37¼"H Overall Size: 105"W x 37"D x 41½"H Number of Doors for 36" Lockers Double Door - DD Door Material Steel Lock Type Keyed Lock Digital Lock - DL (Price is Per Lock) Metal Frame Color White Powder Coat Black Textured Powder Coat	CC08	5,970.00	5,970.00	-	-	LTL	-	-
			N/C	N/C					
			Upcharge	N/C					
			Upcharge	N/C					
			75.00	75.00					
			N/C	N/C					
			N/C	N/C					
	CC10 Resi™ Storage - A-Frame Bistro/Counter w/o Riser (Long) Counter Size: 105"W x 37"D Overall Size: 105"W x 37"D x 41½"H Number of Doors for 36" Lockers Double Door - DD Door Material Steel Lock Type Keyed Lock Digital Lock - DL (Price is Per Lock) Metal Frame Color White Powder Coat Black Textured Powder Coat	CC10	5,950.00	5,950.00	-	-	LTL	-	-
			N/C	N/C					
			Upcharge	N/C					
			Upcharge	N/C					
			75.00	75.00					
			N/C	N/C					
			N/C	N/C					
	CC11 Resi™ Storage - A-Frame Bistro/Counter w/o Riser (Short) Counter Size: 75"W x 37"D Overall Size: 75"W x 37"D x 41½"H Number of Doors for 36" Lockers Double Door - DD Door Material Steel Lock Type Keyed Lock Digital Lock - DL(Price is Per Lock) Metal Frame Color White Powder Coat Black Textured Powder Coat	CC11	5,300.00	5,300.00	-	-	LTL	-	-
			N/C	N/C					
			Upcharge	N/C					
			Upcharge	N/C					
			75.00	75.00					
			N/C	N/C					
			N/C	N/C					

Resi™ Storage - Stand-Alone Locker Options

Resi™ Storage - Stand-Alone Locker Options									
	CCL18C Resi™ Storage - 18" Single Locker Overall Size: 15"W x 18"D x 18½"H Door Material Steel Lock Type Keyed Lock Digital Lock - DL (Price is Per Lock) Metal Color White Powder Coat Black Textured Powder Coat	CCL18C	350.00	350.00	-	-	LTL	-	-
			Upcharge	N/C					
			Upcharge	N/C					
			75.00	75.00					
			N/C	N/C					
			N/C	N/C					
			N/C	N/C					
	CCL36C Resi™ Storage - 36" Single Locker with internal shelf between doors Overall Size: 15"W x 18"D x 36½"H Number of Doors for 36" Lockers Double Door - DD Door Material Steel Lock Type Keyed Lock Digital Lock - DL (Price is Per Lock) Metal Color White Powder Coat Black Textured Powder Coat	CCL36C	650.00	650.00	-	-	LTL	-	-
			N/C	N/C					
			Upcharge	N/C					
			Upcharge	N/C					
			75.00	75.00					
			N/C	N/C					
			N/C	N/C					
	CCTK Resi™ Storage - Toe-Kick Option for CCL18C & CCL36C Overall Size: 15"W x 15"D x 3¾"H Finish: Black Textured-BL, White-WH	CCTKB CCTKWH	55.00	55.00	-	-	LTL	-	-
	Replacement Keys								
	920000461	Replacement Key 201-300*	25.00	25.00	1	1	1	-	110
	920000462	Master Key	25.00	25.00	1	1	1	-	110

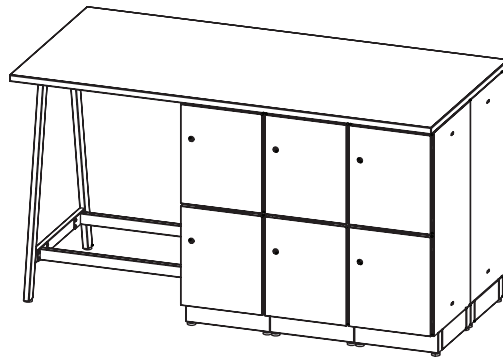
* When requesting a replacement key the lock/key number, located on the face of the lock, is required

These products are subject to California Proposition 65.
Please visit the product detail page on our website for specific information.

RESI™

STORAGE

SPEC GUIDE



SAFCO®

To see more visit: www.safcoproducts.com

©2020 Safco®. All rights reserved.